

# GN 612.10 | Lever indexing plungers

Rest position, zinc alloy



## BODY

Die-cast zinc alloy, black epoxy resin coating, matte finish.

## PLUNGER

Zinc-plated steel.

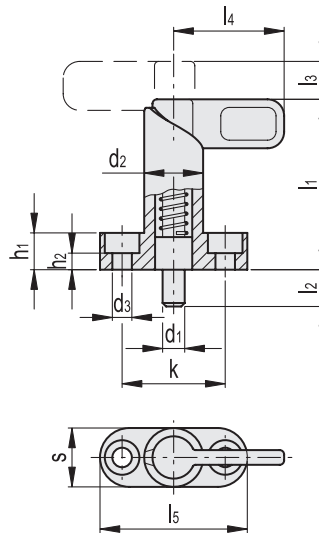
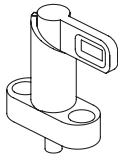
## LEVER

High-resilience polyamide based (PA) technopolymer, black colour, matte finish.

## FEATURES AND APPLICATIONS

GN 612.10 lever indexing plungers are used when the plunger must be retracted quickly.

By rotating the lifting lever by 180°, a notch keeps the plunger in the retracted position.



### Conversion Table

1 mm = 0.039 inch

d1	
mm	inch
6	0.24
8	0.31
10	0.39
12	0.47

**METRIC**

Code	Description	d1 Plunger -0.05 Hole +0.10 +0.05	d2	d3	h1	h2	k	l1	l2	l3	l4	l5	s	Spring preload [N]	Spring max load [N]	
GN.34381	GN 612.10-6-10-16-SW	6	16	5.5	10	4.5	28	46	10	10	30	40	16	12	32	53
GN.34383	GN 612.10-8-10-16-SW	8	16	5.5	10	4.5	28	46	10	10	30	40	16	12	32	68
GN.34385	GN 612.10-8-12-20-SW	8	20	5.5	10	4.5	32	57	12	12	37	45	20	21	58	72
GN.34387	GN 612.10-10-10-16-SW	10	16	5.5	10	4.5	28	46	10	10	30	40	16	12	32	119
GN.34389	GN 612.10-10-12-20-SW	10	20	5.5	10	4.5	32	57	12	12	37	45	20	21	58	126
GN.34391	GN 612.10-12-12-20-SW	12	20	5.5	10	4.5	32	57	12	12	37	45	20	21	58	130

- 1
- 2
- 3
- 4
- 5
- 6
- 7
- 8
- 9
- 10
- 11
- 12
- 13
- 14
- 15
- 16
- 17
- 18

Indexing and positioning elements